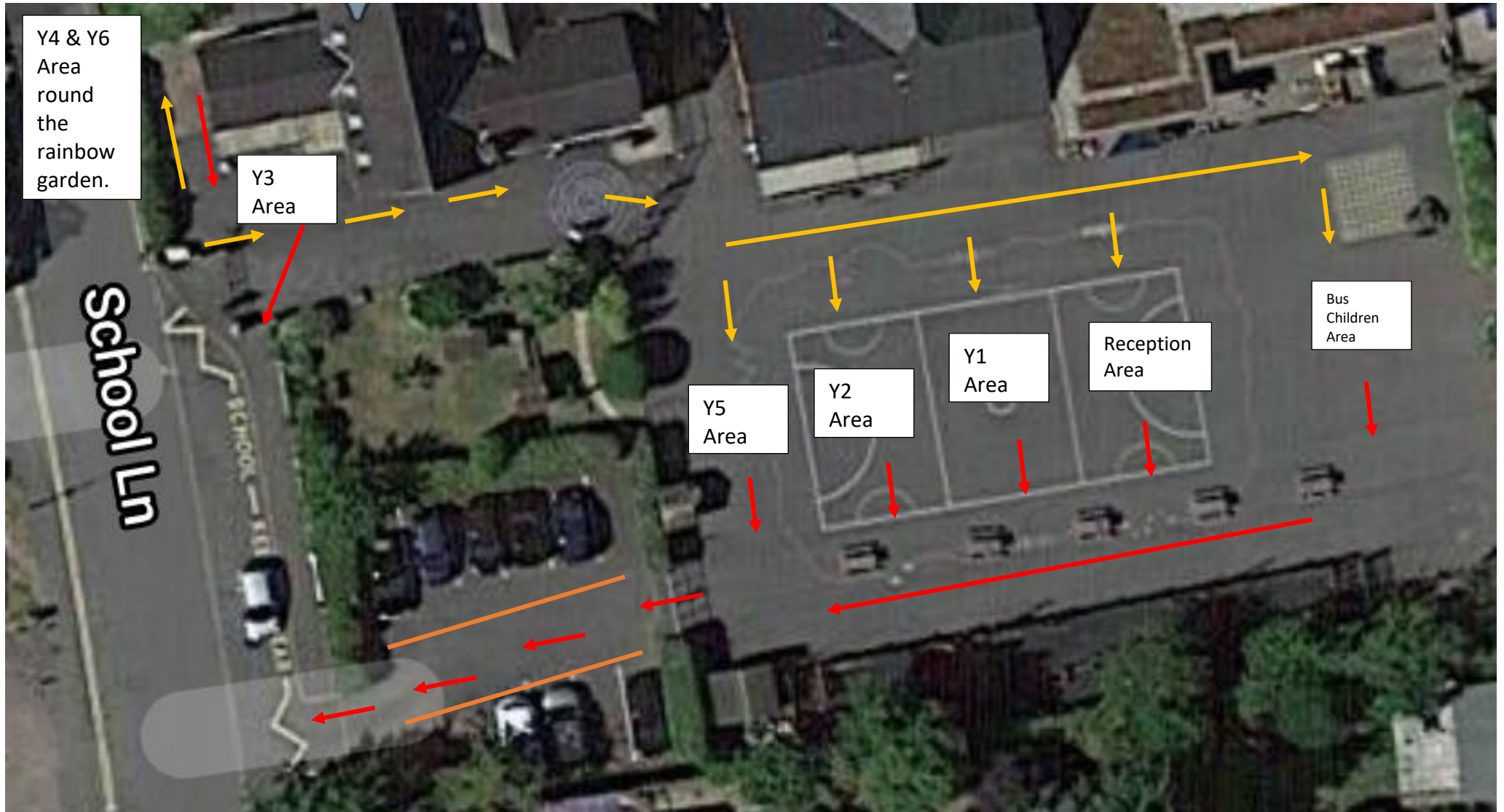




School Exit Routes (Face coverings must be worn on school site)

- Year 5 now using the playground entrance.
- Parents allowed on to playground at the agreed staggered times to collect their child and then exit via red route (through staff car park).





Year 4 & Year 6 (Face coverings must be worn on school site)

- Waiting area in the cordoned off car park area.
- Please use the metal gate near the main entrance for entering & exit school grounds and avoid the barrier which is in place for everyone's protection.
 - Although the waiting areas are now the same, there is a twenty minute difference between collection times to allow for efficient exits.





School Drop off & Collection Updates

	River Room	Nursery	Reception	Y1	Y2	Y3	Y4	Y5	Y6
Drop off/ Collection point	Main Reception	Olive Courtyard	Via playground (then straight into R)	Via playground (then straight into Y1)	Via playground (then straight into Y2)	Y3 Door via Ramp	Cloakroom near Rainbow Garden	Via playground (then straight into Y5)	Cloakroom near Rainbow Garden and boiler room.
Entry Time	As per booking	8:45am to 8:55am	9.00am to 9.10am	8.40am to 8.50am	8.50am to 9.00am	8.30am to 8.40am	8.30am to 8.40am	8.40am to 8.50am	8.50am to 9.00am
Exit Time	As per booking	As per booking	2.45pm	2.55pm	3.05pm	2.50pm	2.50pm	3.00pm	3.10pm